

The logo for IRG ISA REALTY GROUP is positioned in the top right corner. It features the letters 'IRG' in a large, blue, serif font. Below this, the words 'ISA REALTY GROUP' are written in a smaller, white, sans-serif font, centered within a dark blue rectangular bar.

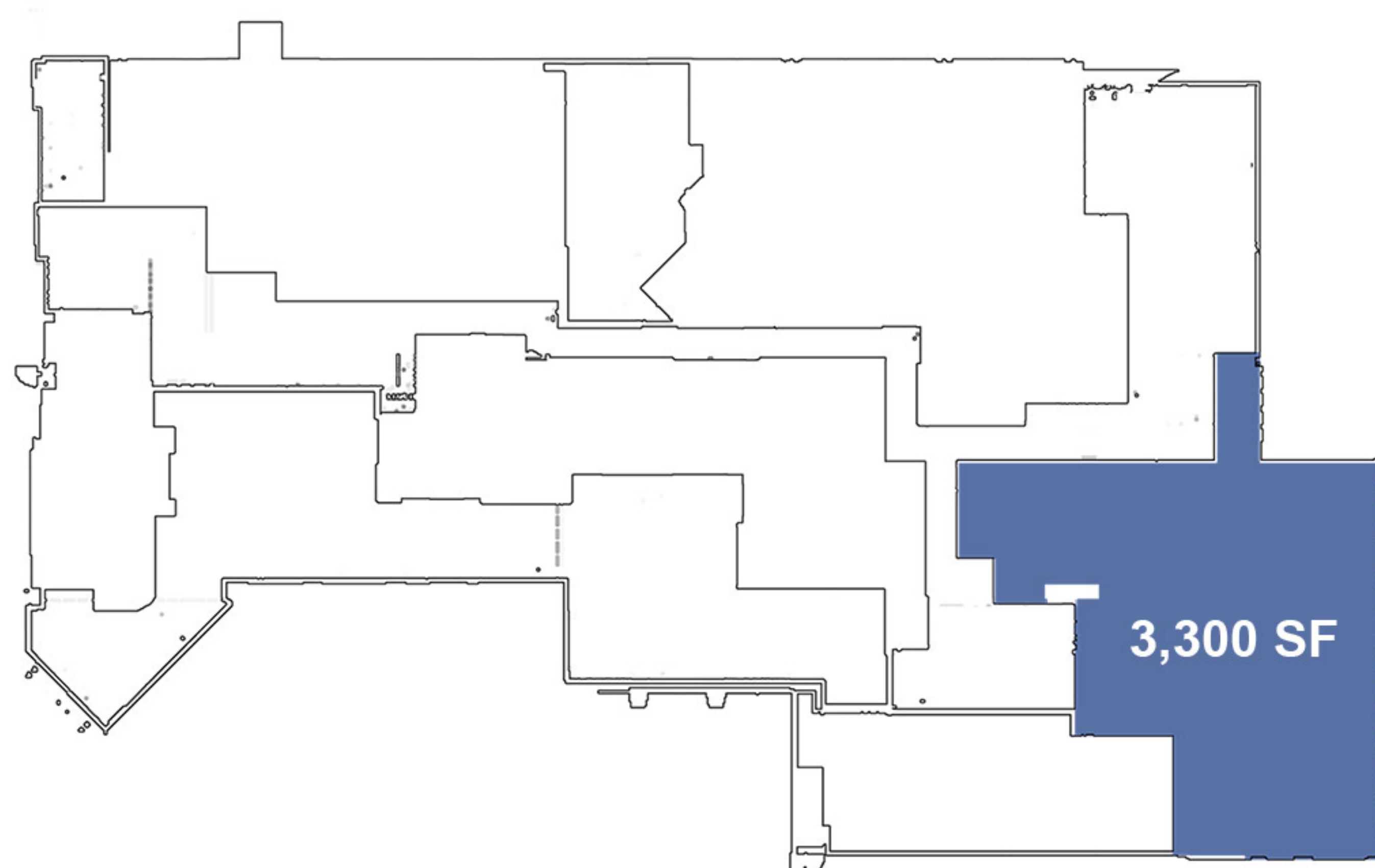
IRG
ISA REALTY GROUP

445

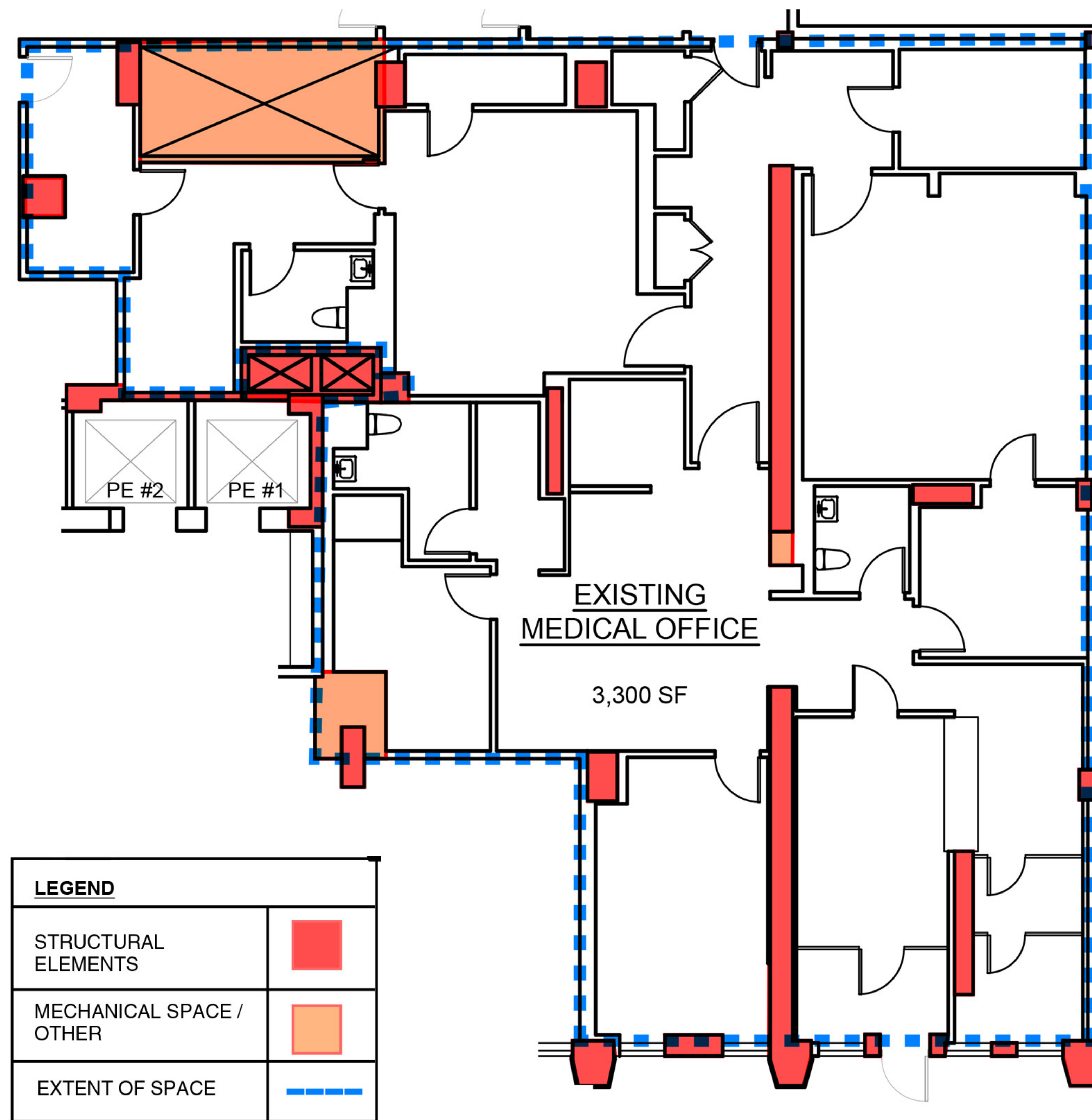
The image shows the exterior of a building with a brick facade and prominent concrete columns. The entrance is centered, featuring a dark door and windows flanked by small bushes. A yellow awning is above the door. A black lamp post with a spherical globe stands to the right of the entrance. The ground is paved with dark bricks. In the foreground, there are concrete steps and a planter with purple flowers.

449 EAST 58th STREET
Between First Avenue and Sutton Place

449 EAST 58th STREET - Floorplan



58th Street



449 EAST 58th STREET

Available Space

Ground: Approx. 3,300 SF
TOTAL: Approx. 3,300 SF

Frontage.....Approx 33'
TermNegotiable
PossessionImmediate
RentUpon Request

Comments:

- Medical Space
- Formerly Advanced Vascular Care
- Dense Residential Market
- At base of a 360 Unit 47 Story Residential Tower

Neighbors:

Trader Joe's, TJ Max, Queensboro Bridge, Roosevelt Island Tramway, Sutton Tennis Club



ISA Realty Group, LLC makes no warranty, expressed or implied, as to the accuracy or completeness of this communication and any attachment.

This communication may contain errors and omissions. Nothing herein is binding on any party.

LOUIS FRANCO 212.689.1646
louis.franco@isarealtygroup.com

JACK HURLEY 212.689.0099 x3
jack.hurley@isarealtygroup.com

JOSEPH ISA 212.689.1645
joseph.isa@isarealtygroup.com

DYLAN McCULLOUGH 212.689.0099 x4
dylan.mccullough@isarealtygroup.com