



698

TENTH AVENUE

**Between 48th and 49th Streets
(MIDTOWN WEST)**

SKIN SPA
INDULGE YOUR SKIN

212.581.1398

IRG

ISA REALTY GROUP

698 TENTH AVENUE

SPACE DETAILS

Available Space

Ground: Approx. 1,300 SF (ceiling approx. 10')

Basement: Approx. 1,000 SF (ceiling approx. 7')

Outdoor area: Approx. 250 SF

TOTAL: Approx. 2,550 SF

Frontage.....Approx 15'

TermNegotiable

PossessionImmediate

RentUpon Request

Space Features:

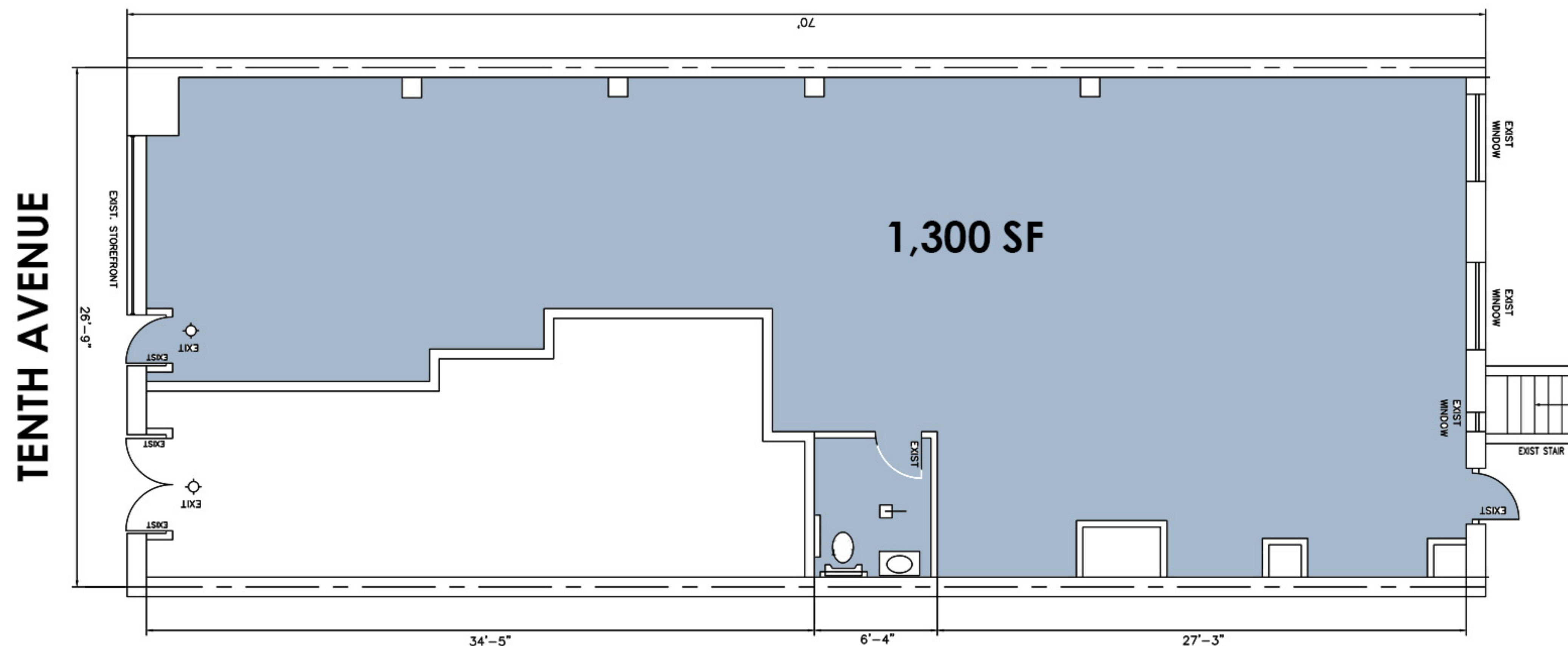
- Outdoor useable patio space
- Dense Residential Market
- All Uses Considered
- New 160 Unit residential development, with an outdoor public space/park coming soon across the street



698 TENTH AVENUE NEIGHBORHOOD & FLOORPLAN

NEIGHBORS:

NY Public Library, Target, Hasalon by Eyal Shani, Skyline Hotel, Hell's Kitchen Park, Trek, Brite Dental Spa, Bond Vet, Skin Spa, Janovic Paint, M542 Manhattan Bridges High School, Success Academy Hell's Kitchen



FIRST FLOOR PLAN



NEIGHBORHOOD MAP



698 TENTH AVENUE

Between 48th and 49th Streets



ISA REALTY GROUP, LLC
9 EAST 45th STREET, 4th Floor
NEW YORK, NY 10017

212.689.0099
IsaRealtyGroup.com

LOUIS FRANCO **212.689.1646**
louis.franco@isarealtygroup.com

JOSEPH ISA **212.689.1645**
joseph.isa@isarealtygroup.com

JACK HURLEY **212.689.0099**
jack.hurley@isarealtygroup.com